

**Transfer Student Talking Points**  
**Fall 2015**  
**Appalachian State University – Main Campus**

**Enrollment and Demographic Data**

- ❖ New transfer student enrollment is 1,196 students, a 4.2% increase from Fall 2014 and a 7.3% increase from Fall 2013.
- ❖ The male to female ratio is 54:46, which is an increase from a relatively stable 50:50 over the last three years.
- ❖ Diverse student enrollment (for which ethnicity/race is known) is 16.6%, up from 15.3% in Fall 2014 and 14.1% in Fall 2013. The small gains are in Asian, Black or African American, and Hispanic populations.

**Prior College Experience Data**

- ❖ Students transfer with varying number of hours:
  - 52% transfer as sophomores – stable from Fall 2014
  - 32% transfer as juniors – up from 31% in Fall 2014
  - 13% transfer as freshmen – down from 15% in Fall 2014
  - 2% transfer as seniors – stable from Fall 2014
- ❖ Students transfer from three types of colleges:
  - 70% from community colleges - up from 67% in Fall 2014
  - 28% from four-year colleges – down from 31% in Fall 2014
  - 2% from unknown types (such as foreign institutions or military)
  - Since 2010 there has been an 18 percentage point increase in community college transfers (52% of students transferred from a community college in 2010).
- ❖ There are 30 colleges that send 10 or more transfer students to Appalachian. The top 5 transfer schools are:
  - Caldwell Community College & Technical Institute - 98, up from 96 in Fall 2014
  - Wake Technical Community College (Raleigh) - 83, up from 65 in Fall 2014
  - Central Piedmont Community College - 59, down from 73 in Fall 2014
  - Catawba Valley Community College – 53, up from 37 in 2014
  - Wilkes Community College - 51, down from 54 in Fall 2014
  - Jump Start colleges (Caldwell, Wilkes, and CPCC) represented 17% of incoming Fall 2015 students, a decrease from 19% in Fall 2014.
- ❖ The top major departments selected by transfer students at the time of admission:
  - 6.7% - Health and Exercise Science – up from 5.2% in Fall 2014
  - 6.6% - Communications – up from 3.9% in Fall 2014
  - 6.1% - Psychology – up from 5.1% in Fall 2014
  - 5.9% - Biology - up from 4.8% in Fall 2014
  - 5.9% - Management - down from 6.7% in Fall 2014
  - 5.4% - Government & Justice Studies – down from 5.7% in Fall 2014

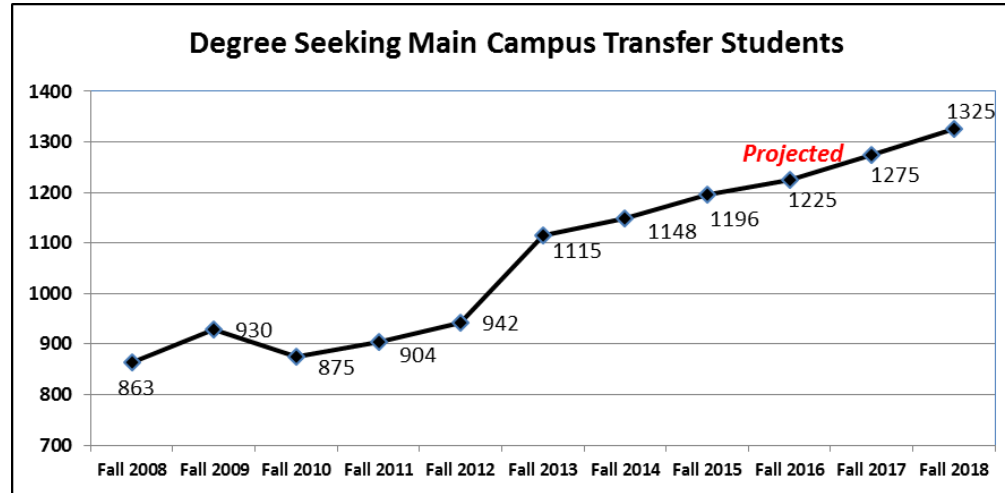
**Academic Performance at Appalachian**

- ❖ Students who enroll as first-time freshmen earn slightly better grades than transfers. The average Fall term GPA for sophomore transfers is 2.76, compared to 3.01 for sophomores who first enrolled at Appalachian as new freshman. The average cumulative grade point average at the end of Spring is 2.86 for the fall sophomore transfer cohort and 3.17 for the fall cohort of sophomores who first enrolled at Appalachian as new freshman. *[Note: Data for Fall 2014 transfers.]*
- ❖ The most recent sophomore to junior persistence rate for transfer students was 86.0% versus 90.2% of students who began as freshman *[Note: Fall 2014 cohort; retained or graduated]*.
- ❖ 31.1% of the 2014-2015 graduating class first enrolled at Appalachian as transfer students.

## Appalachian State University Main Campus Transfer Students

*Fall 2015 Data Unless Specified Otherwise*

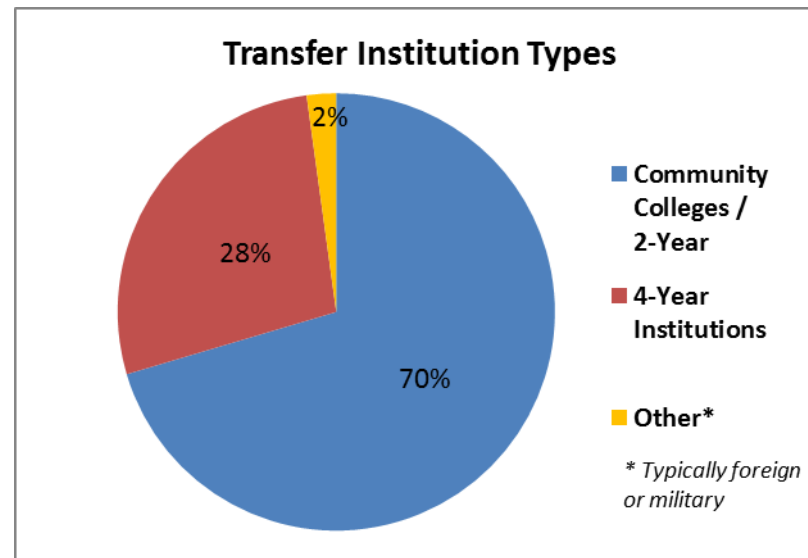
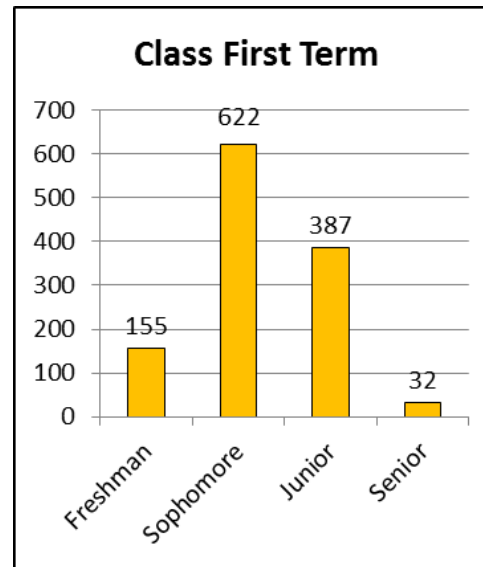
Enrollment Totals			
Term	FT	PT	Total
Fall 2006	744	24	768
Fall 2007	795	16	811
Fall 2008	844	19	863
Fall 2009	909	21	930
Fall 2010	852	23	875
Fall 2011	880	24	904
Fall 2012	916	27	943
Fall 2013	1095	20	1115
Fall 2014	1123	25	1148
Fall 2015	1169	27	1196



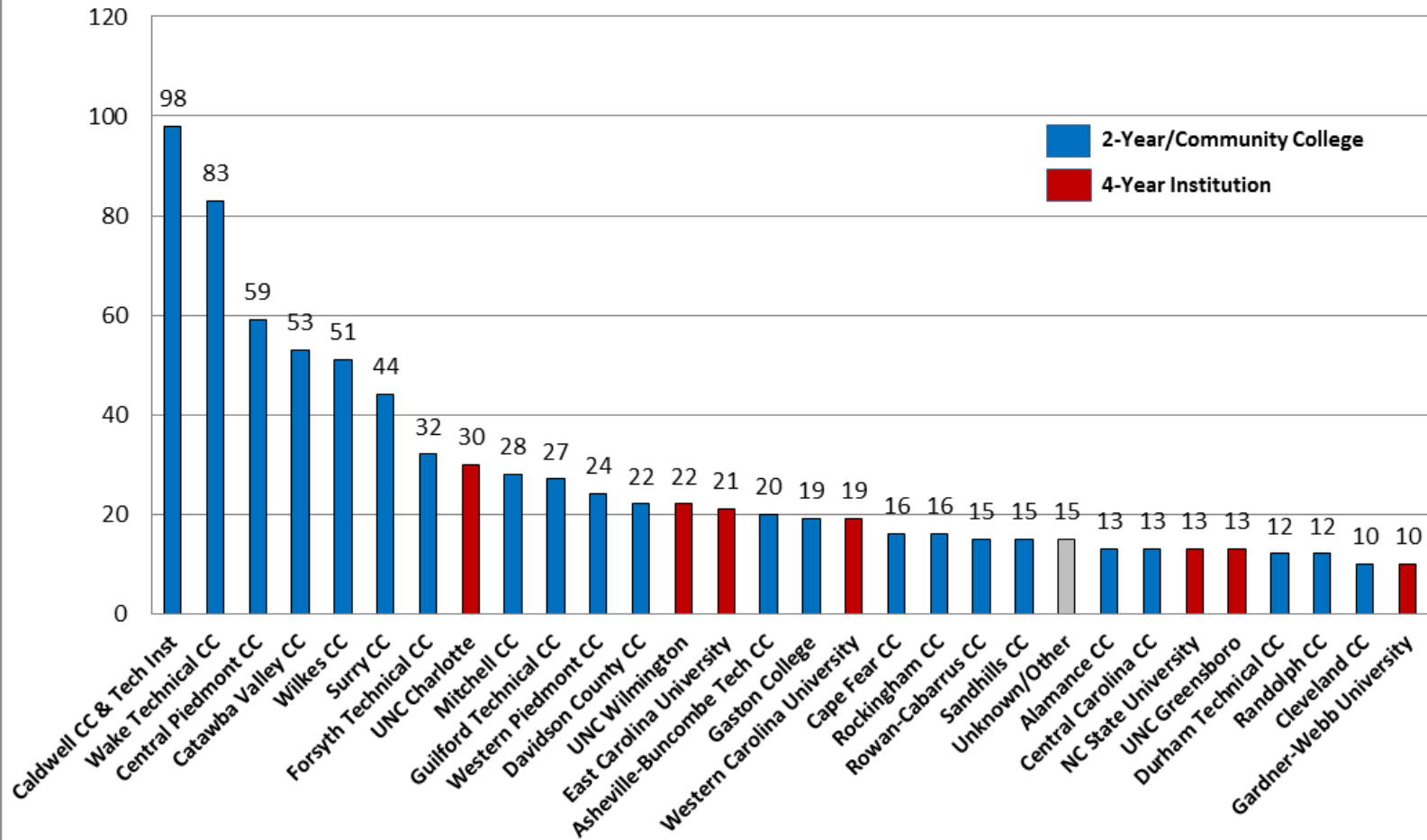
**Class First Term**

TERM	FR	SO	JR	SR	UN*	Grand Total
Fall 2008	140	460	236	27		863
Fall 2009	141	463	296	30		930
Fall 2010	128	460	263	24		875
Fall 2011	120	489	273	22		904
Fall 2012	105	494	316	27	1	943
Fall 2013	126	656	309	24		1115
Fall 2014	169	599	356	24		1148
Fall 2015	155	622	387	32		1196
<i>Fall 2014</i> <i>% of Total</i>	13%	52%	32%	2%		

\*Unclassified



## Transfer Institutions With 10 or More Transfers to Appalachian



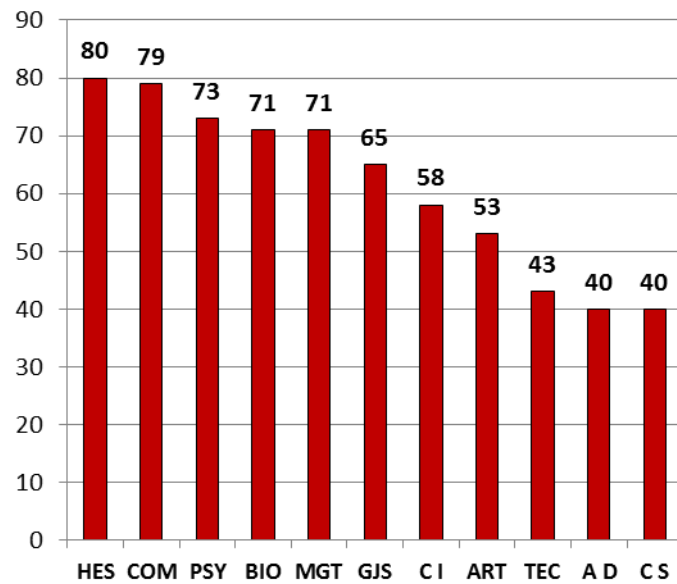
### Academic Performance: Sophomores

Fall 2014	Average of Term GPA Fall 2014	Average of CumGPA End of Spring 2015
New Transfers	2.76	2.86
Sophomores First Enrolled as New Freshman	3.01	3.17

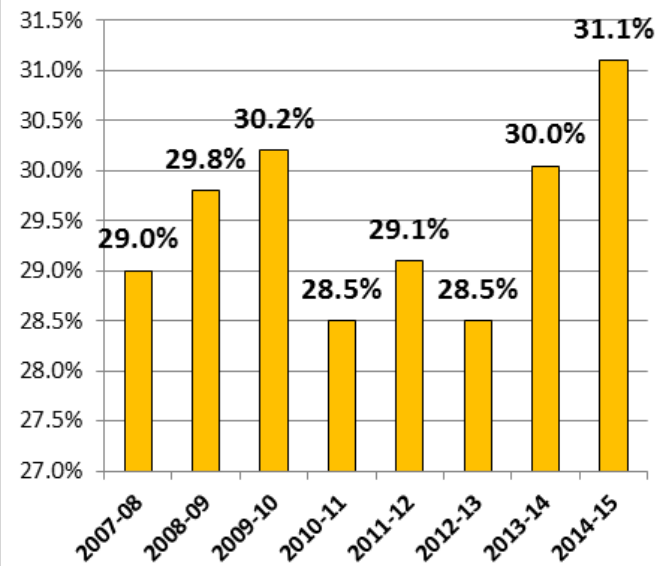
### Sophomore to Junior Persistence Rate *Retained or Graduated*

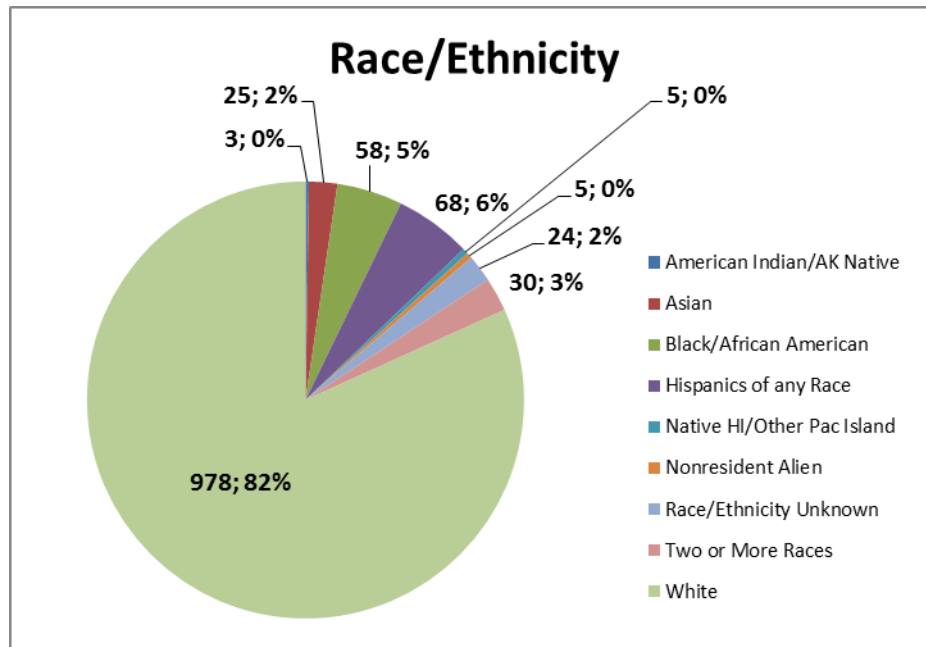
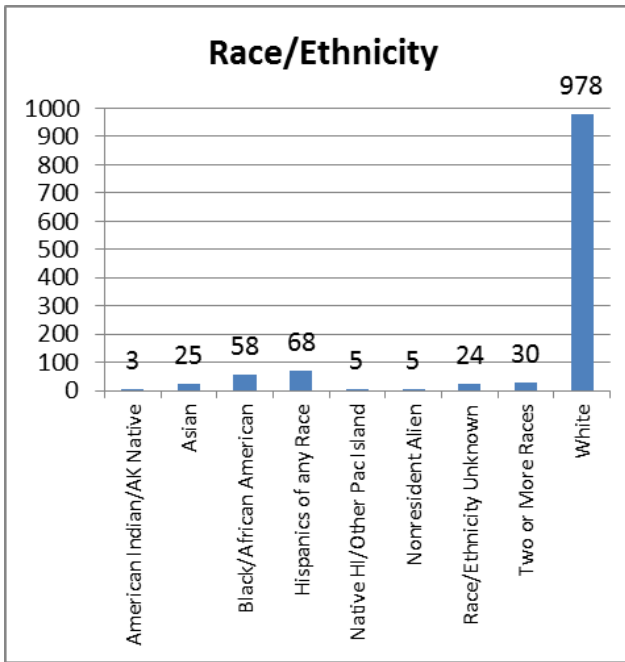
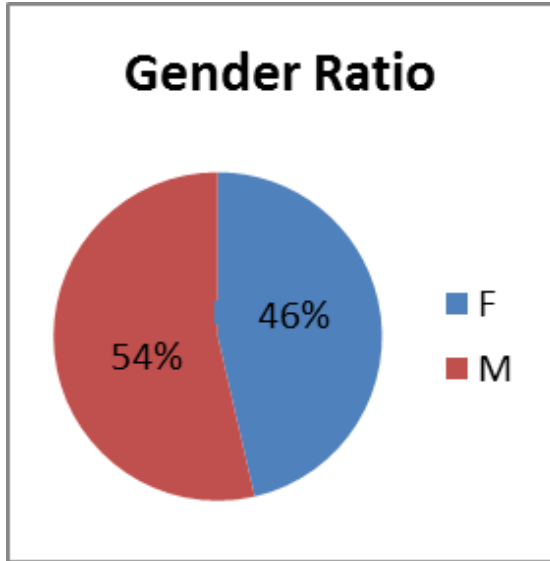
Cohort	Sophomore New Main Campus TR	Sophomores First Enrolled as FR
Fall 2008	85.4%	89.8%
Fall 2009	82.7%	89.6%
Fall 2010	85.4%	90.1%
Fall 2011	85.3%	90.7%
Fall 2012	85.0%	90.3%
Fall 2013	86.0%	90.8%
Fall 2014	86.0%	90.2%

### Top 10 Major Departments: New Transfer Students

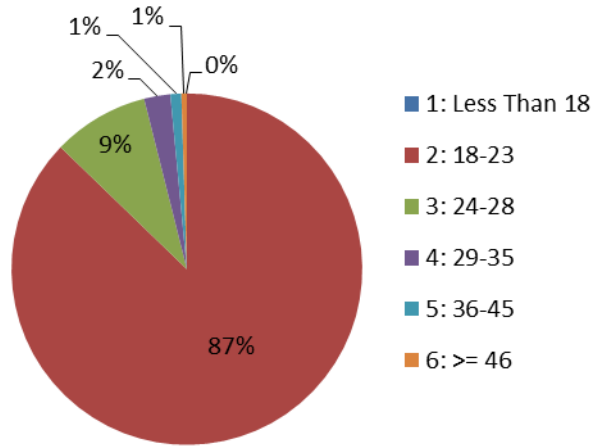


### Percent of Graduating Classes: Began as Transfers





## Age of Students



## Average Age

Fall Term	Transfer Age
2008	20.9
2009	21.0
2010	21.4
2011	21.3
2012	21.5
2013	21.2
2014	21.3
2015	21.3